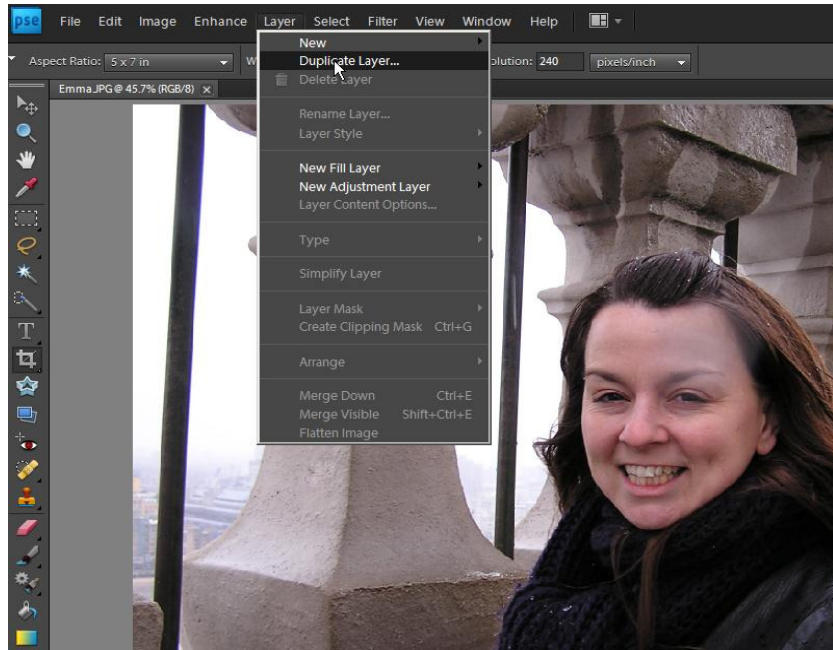


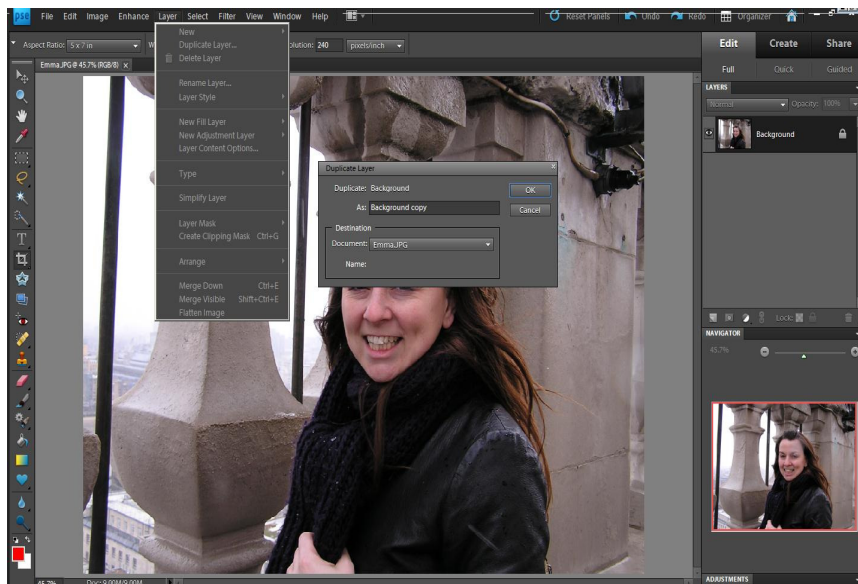
Digital Imaging Group

Cloning

Cloning is the process of replacing unwanted pixels in your image with pixels from other parts of the picture and is consequently a very useful tool. The process is, however, a destructive one in the sense that once the changed picture has been saved, the process cannot be undone, so it pays to make a duplicate of your original to work on.

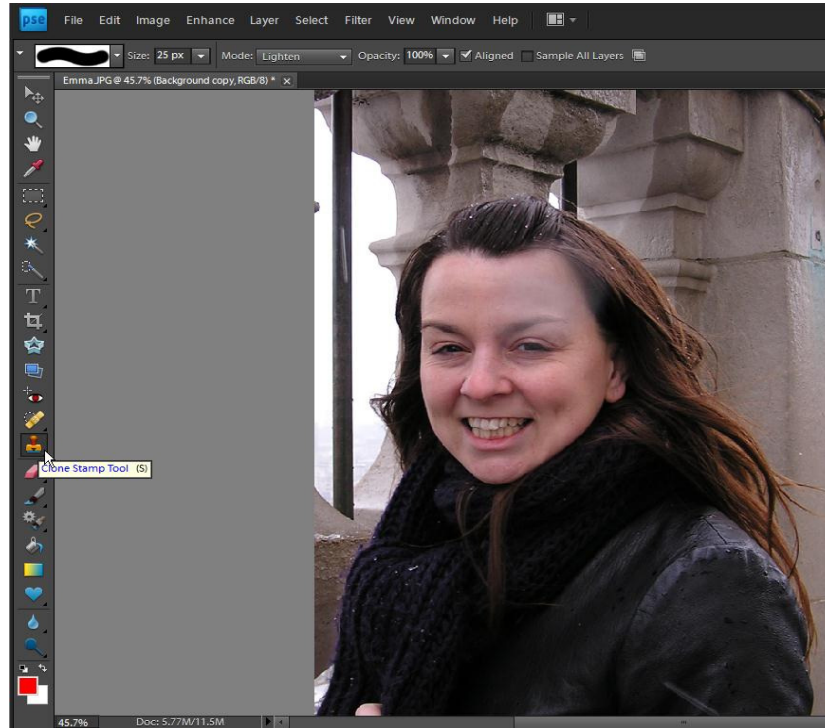


This is easily done by clicking on Layer in the header menus and then on duplicate layer. This in turn will generate another dialogue box giving you the option to rename the layer.

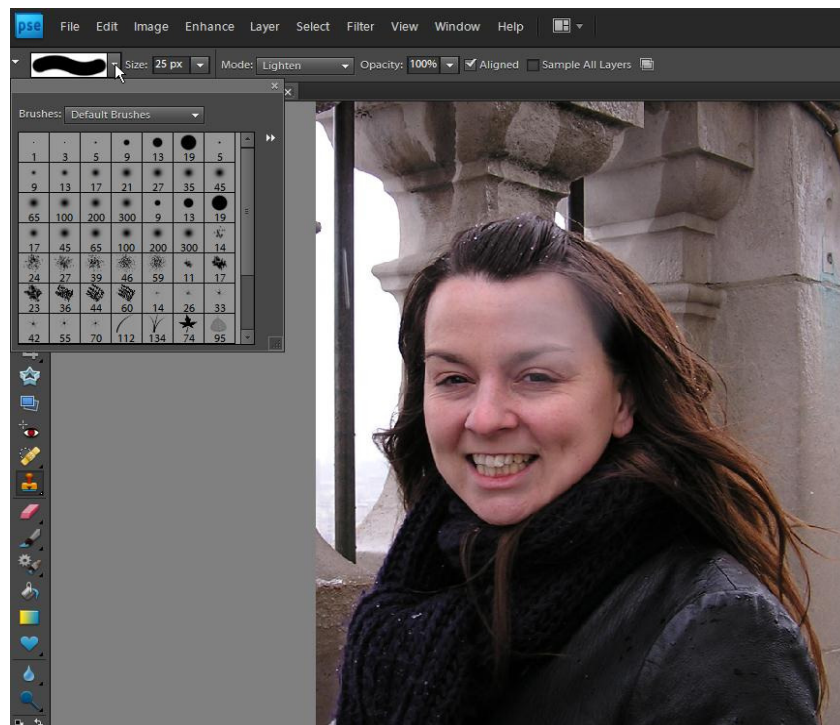


You will notice that the background layer (or whatever you have named it) will appear in the layers box on the right, above the existing Background Layer. You will now be working on this version and not the original.

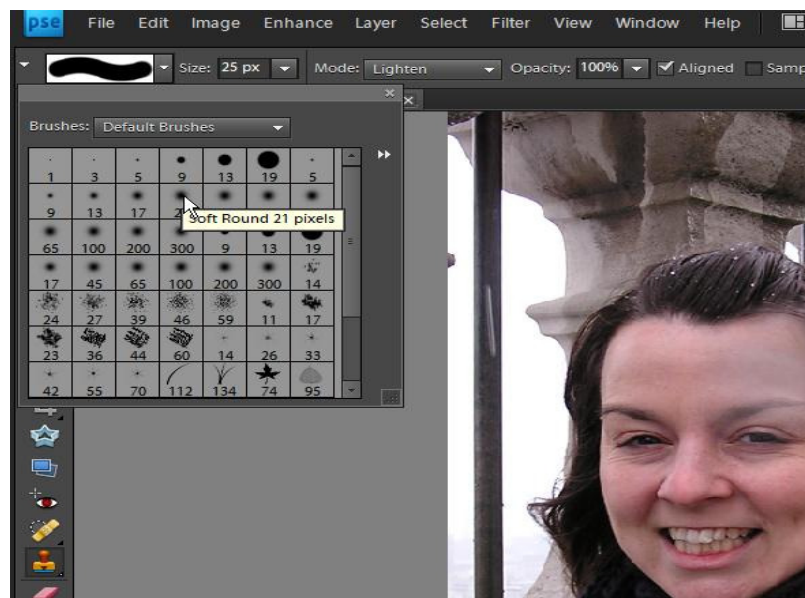
This picture needs straightening and cropping to get the composition you want but will in all probability still have the bar close to Emma in the shot. This is the unwanted part of the image to get rid of.



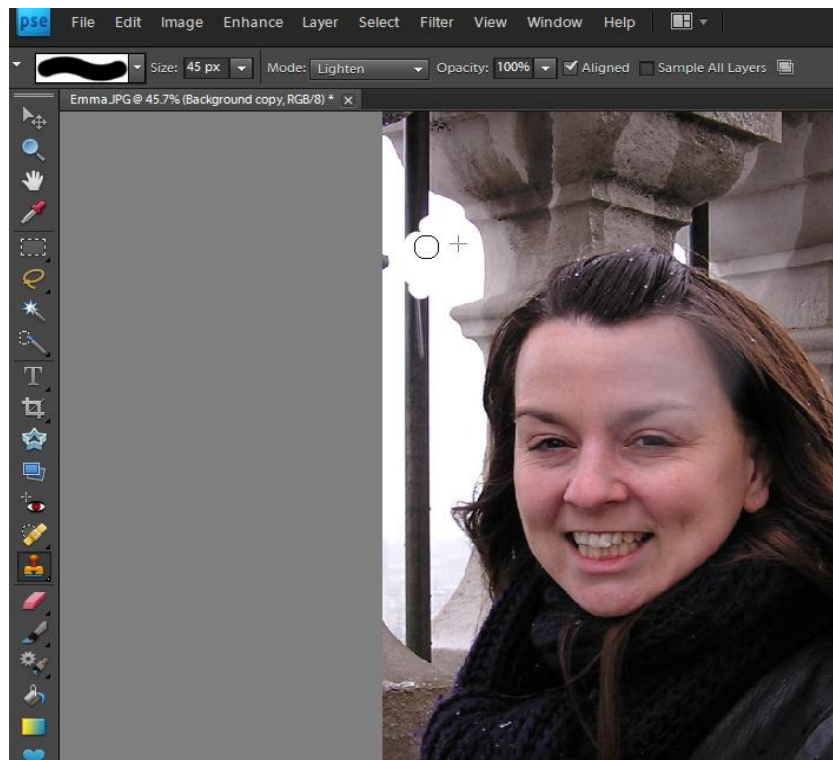
Click on the Clone Stamp Tool and the header bar will change giving you options for brush size etc.



Clicking for the drop down menu as shown will give you a choice of brush sizes and hardness. I prefer not to use a hard brush as it sometimes leaves a distinctive mark so select one that looks a bit fuzzy round the edge and don't worry too much about the size in pixels as this is easily adjusted to suit.



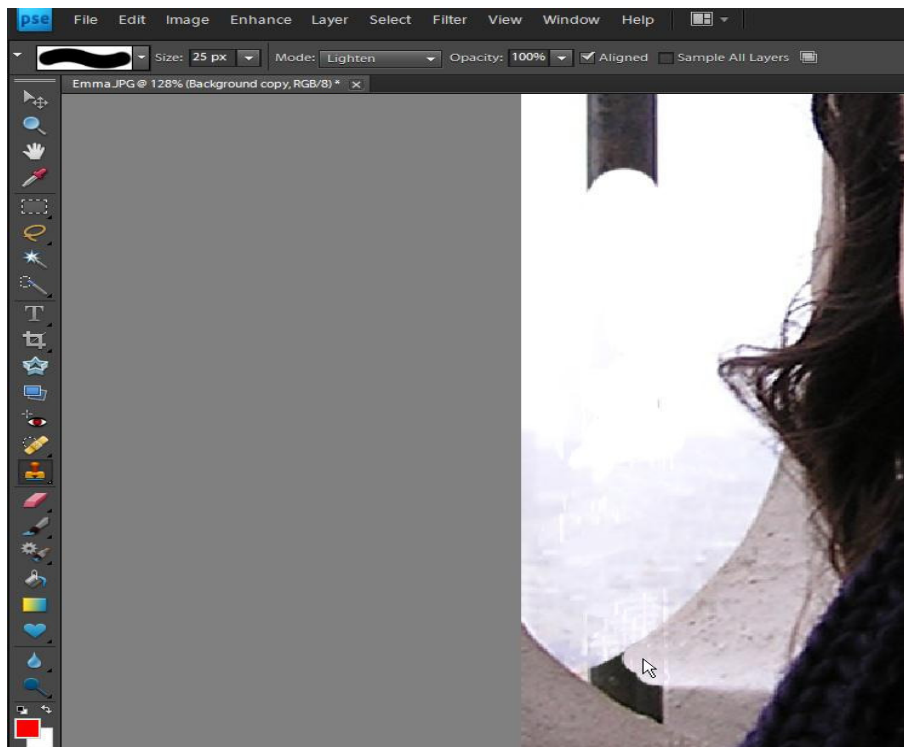
When you move the cursor over the image it will change to a circle representing the size of brush you have chosen. To change the size of the circle use the square bracket keys on your keyboard] to increase and [to decrease the diameter of the brush.



This tool works just like the old rubber stamp so place the brush over an area of colour that you want to move and left click and simultaneously depress the Alt key.

You will notice a cross appears in the circle indicating the spot from which the colour has been selected. This picks up the colour and you can now place the circle over the part of the image you want to remove and left click. This will transfer the colour you have picked up to the area you want to cover. You will notice that the cross appears every time you left click, indicating where you are picking up colour. Be careful that it doesn't move from the colour that you want to transfer or you will end up copying something you don't want. The best advice is "little and often" ie. repeatedly selecting the colour you want from an area close to that you wish to replace.

When you get to detailed areas, zoom in using either the Navigator window or the Zoom tool and then adjust the size of your brush. You can do some remarkably detailed work as you are moving only a few pixels at a time.



When you have the image as you like it, simply go to File and Save As and save your new image. You will still have the original to use again if you wish.